

## LC Series Mobile Mast



### Summary ~ ITS LC Series ~ Light-Duty Mobile Mast System

- A light-duty drawbar trailer with a 3,000lb (1,361kg) capacity GVWR ~ to 500lbs (227kg) of available deck top payload capacity; a single 3,000lb (1,361kg) capacity Torflex axle, telescopic outrigger stabilizing system, 12V/24V wiring and LED lights, adjustable height 2-5/16" ball coupler or NATO 3" (7.6cm) pintle; leveling devices, storage containment, painted with impact and weather resistant black polyuria trailer coating
- Standard mast elevations include  $\pm 32'0''$  (9.7m),  $\pm 44'0''$  (13.4m) and  $\pm 62'0''$  (18.8m) AGL heavy-duty locking telescopic pneumatic masts, self-supporting and guy capable, rugged construction, high-strength heat treated aluminum tubes & collars, low-friction synthetic bearings, shock absorbing bumpers; includes mast base plate and external brackets; to 200lbs (91kg) mast payload capacity
- Manual hand crank or limit switch controlled electric winch tilt assembly; manual pump or compressor driven mast operation

The *LC Series* model designates a 3,000lb (1,361kg) capacity Gross Vehicle Weight Rating (GVWR), light-duty multi-purpose trailer and mast system designed to transport its integrated payload and support customer or ITS-installed equipment in a gross platform area comprising  $\pm 10'0''$ L x 4'2"W (3m x 1.3m); 6'0" (1.83m) overall width including fenders. A multi-section heavy-duty pneumatic locking mast is designed to transport horizontally over the trailer's forward platform and manually or electronically tilt by means of a hand or electric cable winch assembly. The mast may be extended to its full height utilizing either a hand pump or onboard compressor. The *LC Series* is capable of being deployed, elevated to full-height and secured by individual mast-section locks by one person in 20 to 40 minutes depending upon manual or electronic operation.

### ITS LC Series ~ Drawbar Trailer Specifications

- GVWR 3,000lb (1,361kg) Capacity; GAWR 3,000 (1,361kg) Capacity
- Single 3,000 (1,361kg) Dexter Torflex Axle, EZ Lube Grease
- Transport Length  $\sim \pm 13'0''$  (4m); Transport Height  $\pm 6'7''$  (2m)
- Trailer Length  $\pm 13'0''$  (4m), (3'2" (.98m) Drawbar); Width 6'0" (1.8m)
- Platform Area  $\sim$  Approx. 10'L x 6'0"W (3m x 1.8m); 4'2" (1.3m) b/Fenders
- Deployed Footprint  $\sim \pm 13'L$  (4m) x 10'6"W (3.2m) W; 36"L (1m) Outriggers
- Est. Weight w/out Client or ITS-Installed Accessories to  $\pm 2,100$ lb (952kg)
- Customer Equipment Payload Capacity to 500 lbs (227kg)
- Four (4) Telescoping Outriggers; Min. 7,000 lb (3,175kg) Static Load Jacks
- ST 230/80R16 LR E 10-ply Tires; 16 x 8 hole Steel Wheels
- Min. 7,000lb (3,175kg) Static Capacity Adjustable Landing Gear
- LED Lighting, Sealed Wiring, 2-5/16" Ball Coupler or Pintle
- 7-Blade Truck Connector, Operating/Maintenance Manual
- Locking Storage Containment, Leveling Jack Transport Mounts
- 1/8" (.33cm) Steel Plate Deck/Fenders; All Welded Construction
- DOT Safety Decals; Reflectors; Multiple Trailer Levels
- Painted with Black Weather/Impact Resistant Polyuria Coating

### Pneumatic Mast Selection ~ Will-Burt Models from 30'0" (9.1m) to 60'0" (18m)

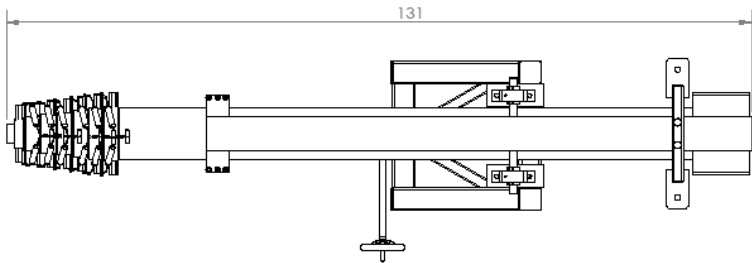
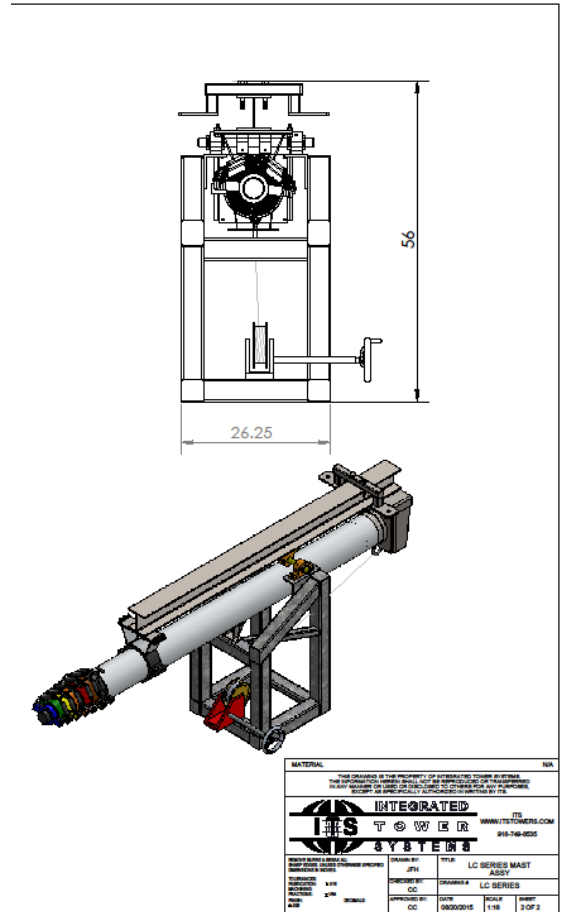
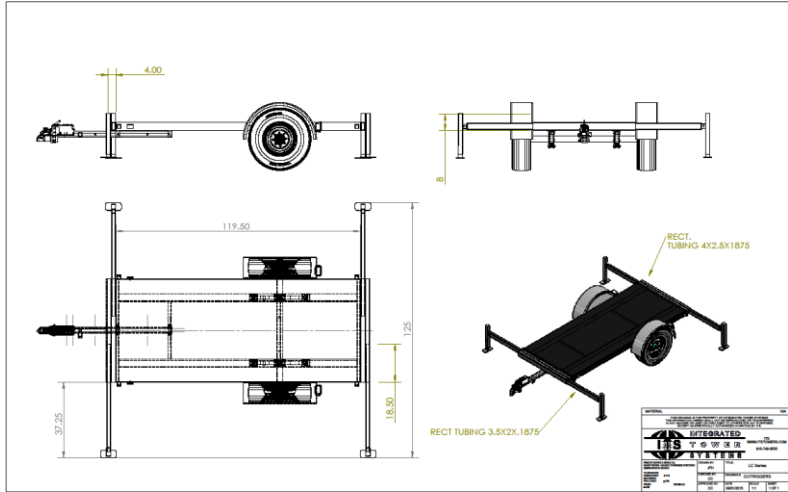
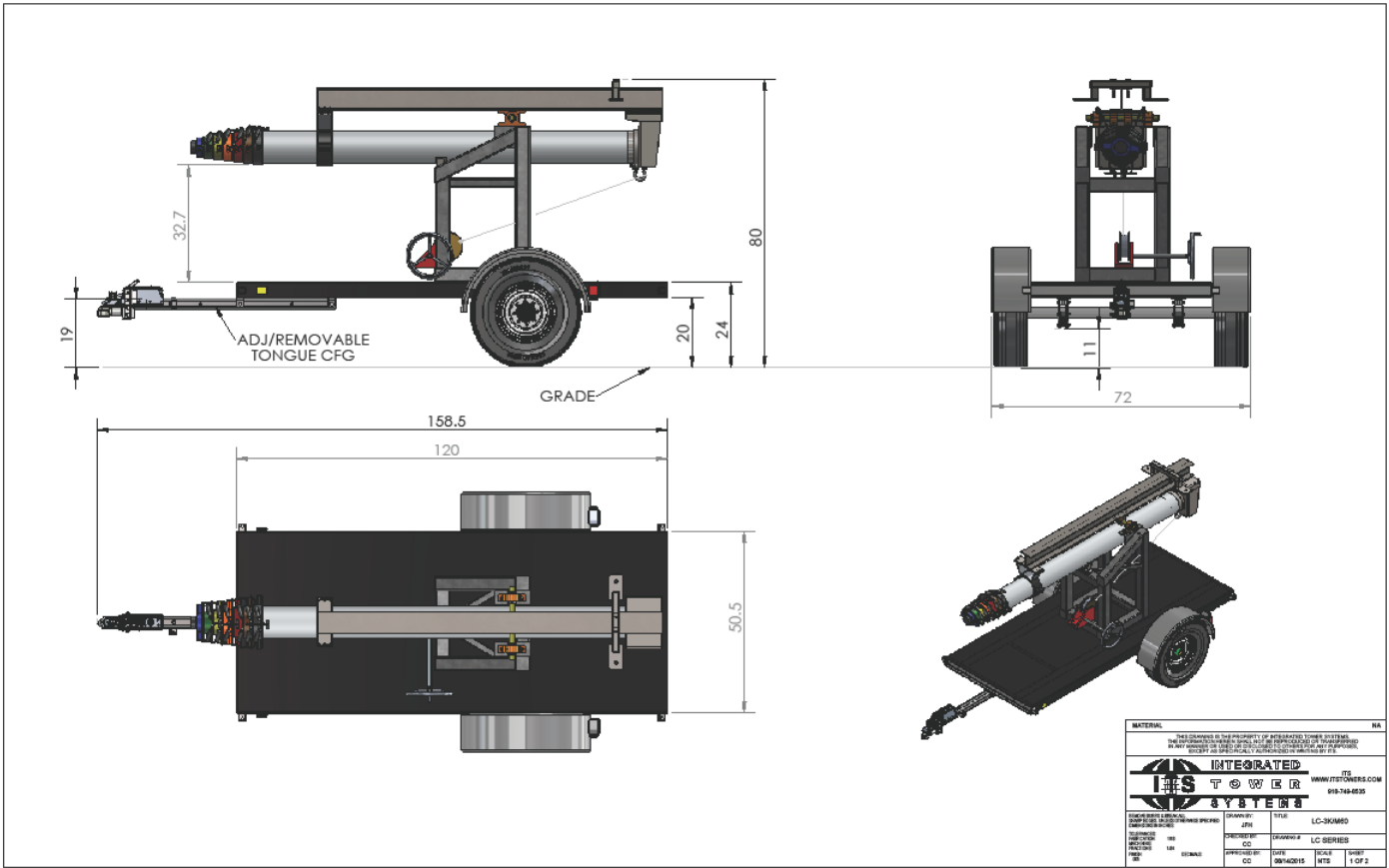
The primary benefits and features of the Will-Burt pneumatic mast includes:

- » Locking collars allow the mast to remain extended indefinitely without air pressure
- » Rugged construction of high strength heat-treated aluminum tubes and collars with low friction synthetic bearings
- » Two full-length external keys on sections; collars have matching keyways that maintain directional azimuth
- » The bumpers are designed to reduce shock on extension and retraction
- » All exterior aluminum surfaces are anodized & sealed for long life; fasteners are plated steel for corrosion resistance
- » Payload capacity of the most appropriate models to 200lbs (91kg)
- » ITS secures the pneumatic mast within a heavy-duty lattice steel exoskeleton ("truss") that protects the mast during the tilt function and offers added strength and stability to the extended mast structure
- » The truss-enclosed mast is secured to a square tube steel support structure that provides maximum protection and minimal deflection/vibration during primary and multi-terrain transport as well as during mast operation

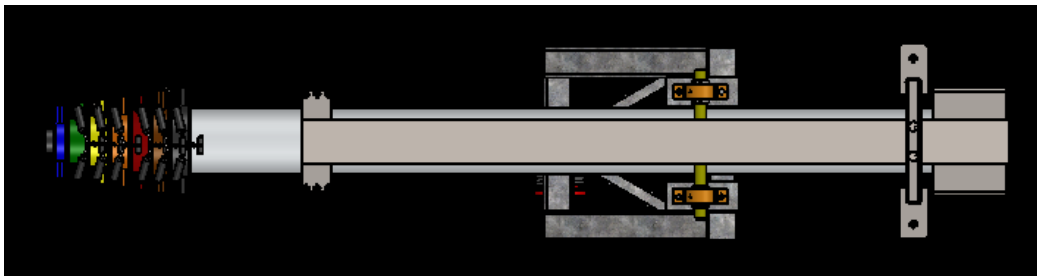
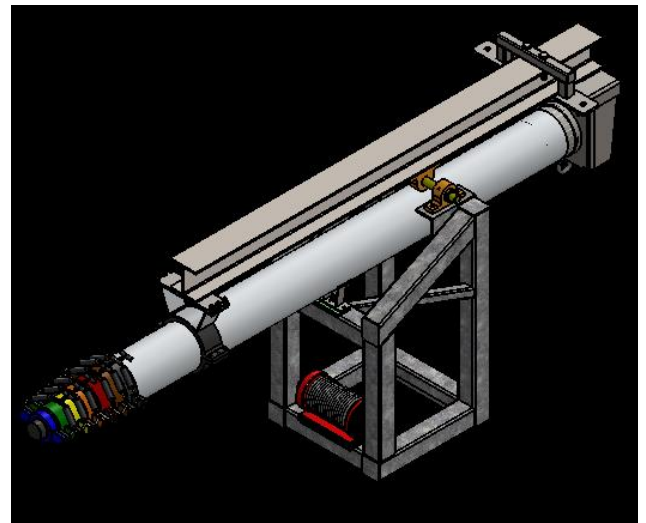
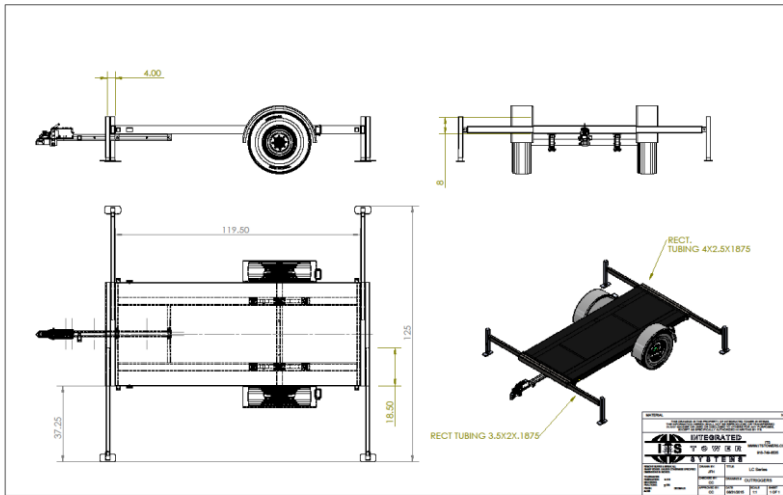
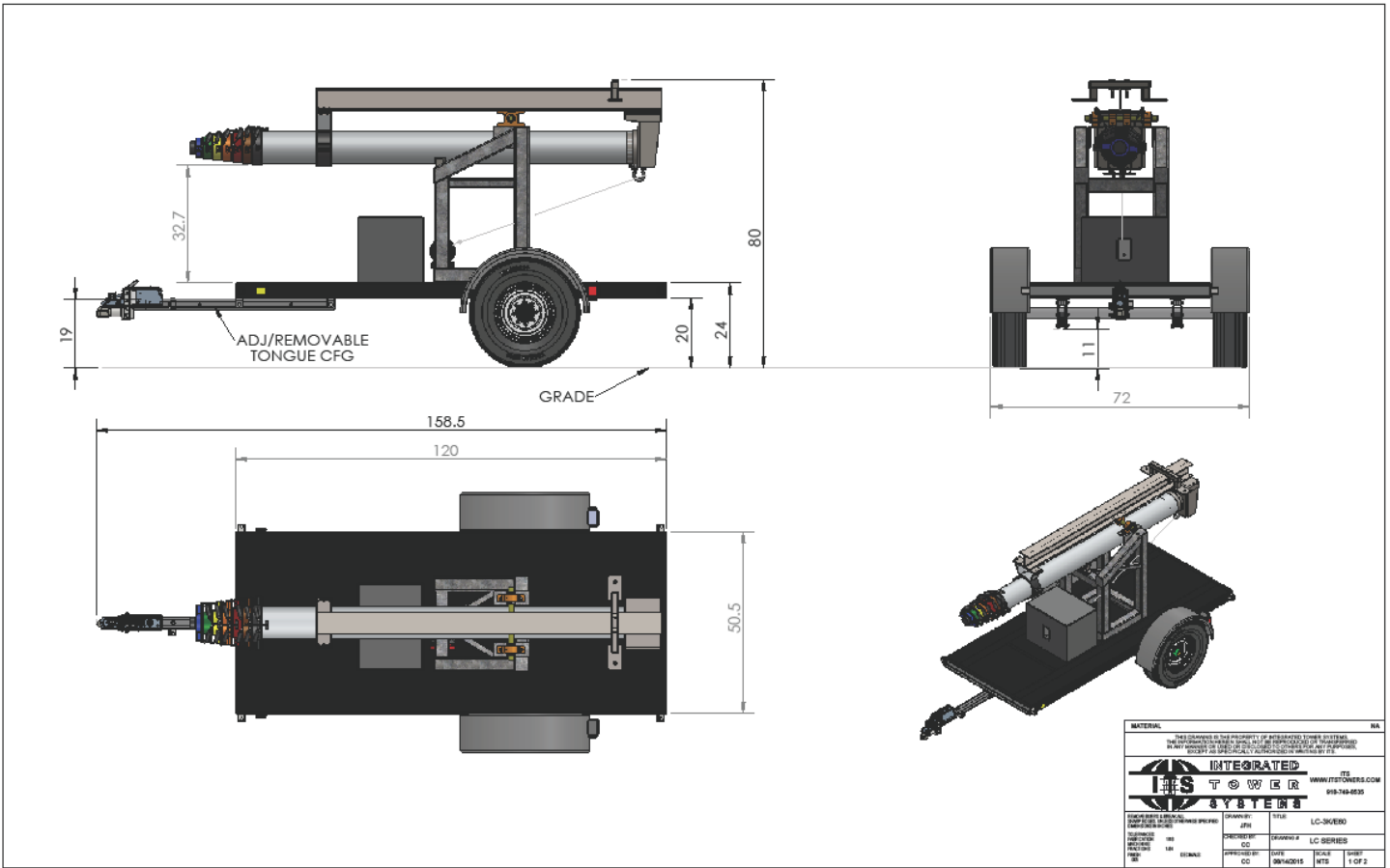
# REPRESENTATIVE LC SERIES MOBILE MAST

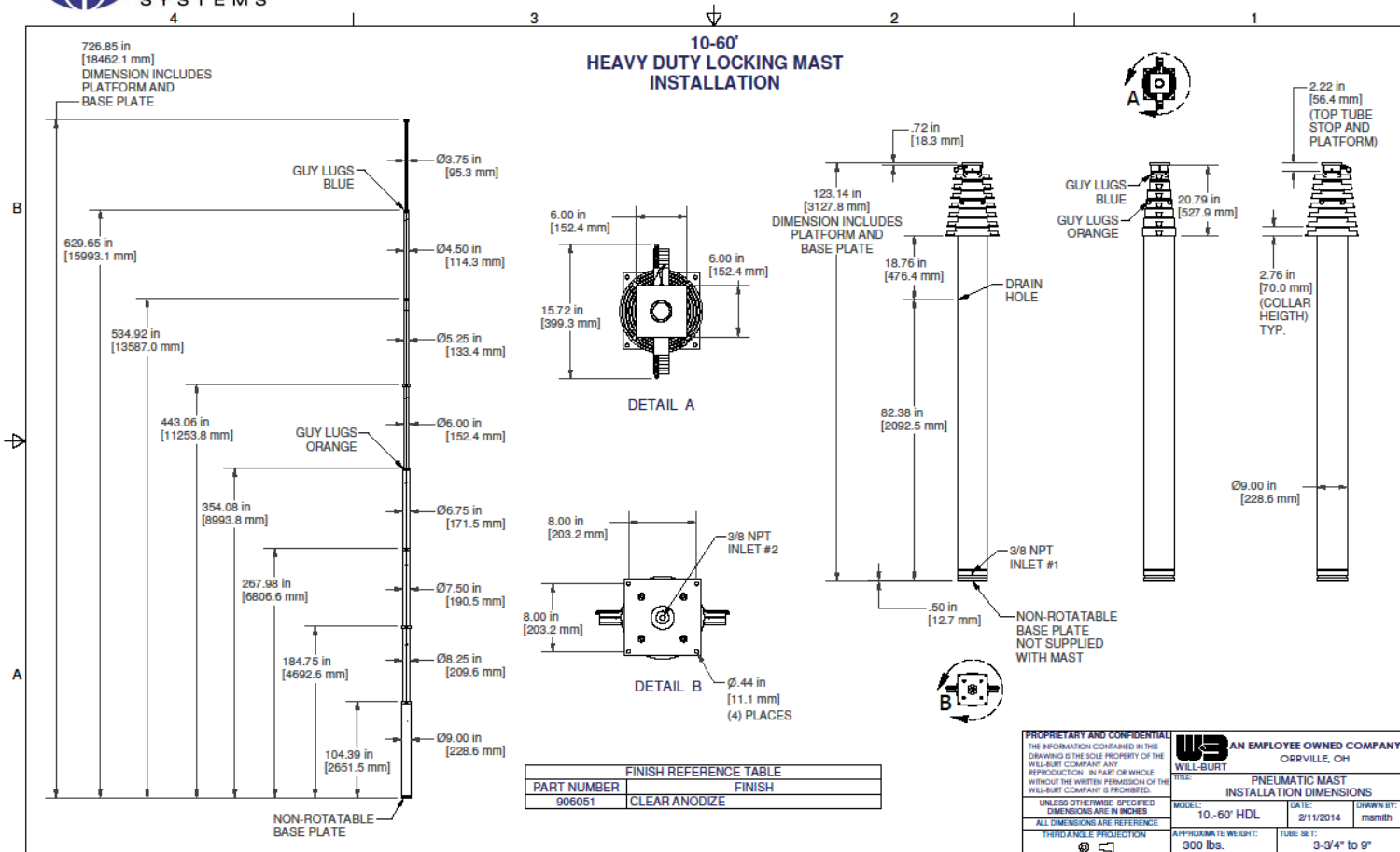


# REPRESENTATIVE LC SERIES MOBILE MAST (Manual Tilt with Hand Pump Mast Extension)



# REPRESENTATIVE LC SERIES MOBILE MAST (Electric Winch Tilt with Compressor-Driven Mast Extension)





<b>PROPRIETARY AND CONFIDENTIAL</b>		<b>WILL-BURT</b> AN EMPLOYEE OWNED COMPANY CORVILLE, OH	
THE INFORMATION CONTAINED IN THIS DRAWING IS THE SOLE PROPERTY OF THE WILL-BURT COMPANY. ANY REPRODUCTION IN PART OR WHOLE WITHOUT THE WRITTEN PERMISSION OF THE WILL-BURT COMPANY IS PROHIBITED.		TITLE: PNEUMATIC MAST INSTALLATION DIMENSIONS	
UNLESS OTHERWISE SPECIFIED, DIMENSIONS ARE IN INCHES.		MODEL: 10-60' HDL	DATE: 2/11/2014
ALL DIMENSIONS ARE REFERENCE THROUGH ANGLE PROJECTION		APPROXIMATE WEIGHT: 300 lbs.	TUBE SET: 3-3/4" to 9"
		DRAWN BY: msmith	

